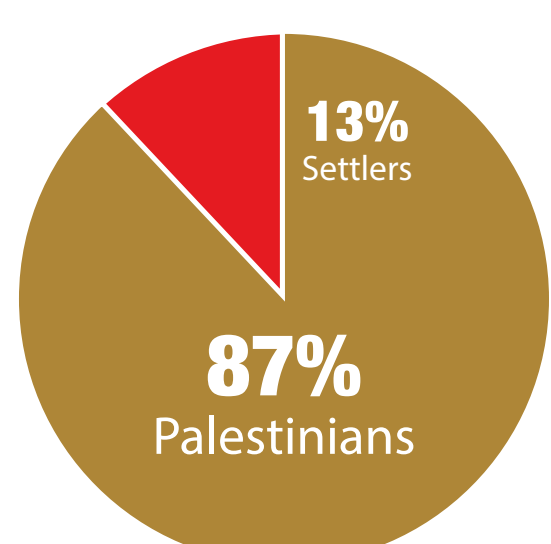


ISRAELI SETTLEMENTS 2018

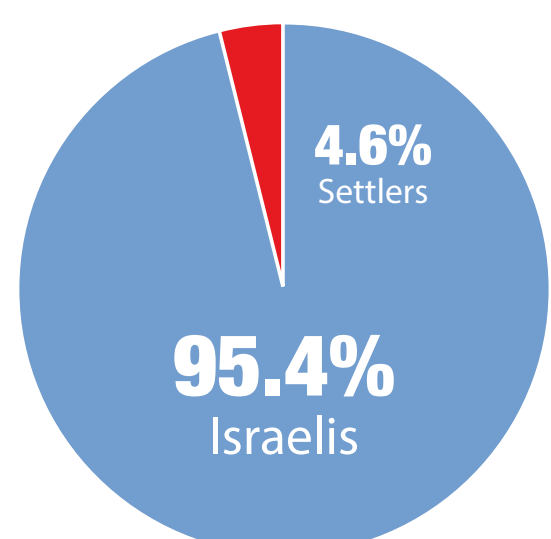
After 51 years of occupation, it is time for a two-state solution

PEACE NOW

To learn more about our work
Peace Now www.peacenow.org.il

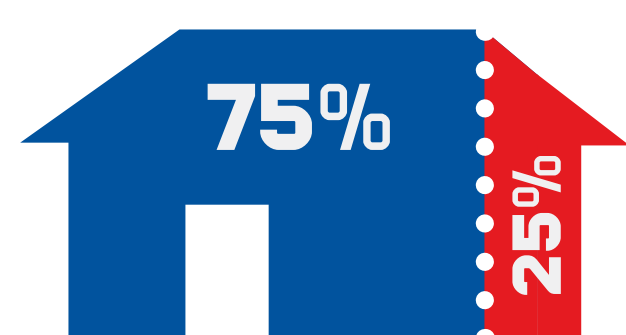


Percentage of settlers out of the total West Bank population



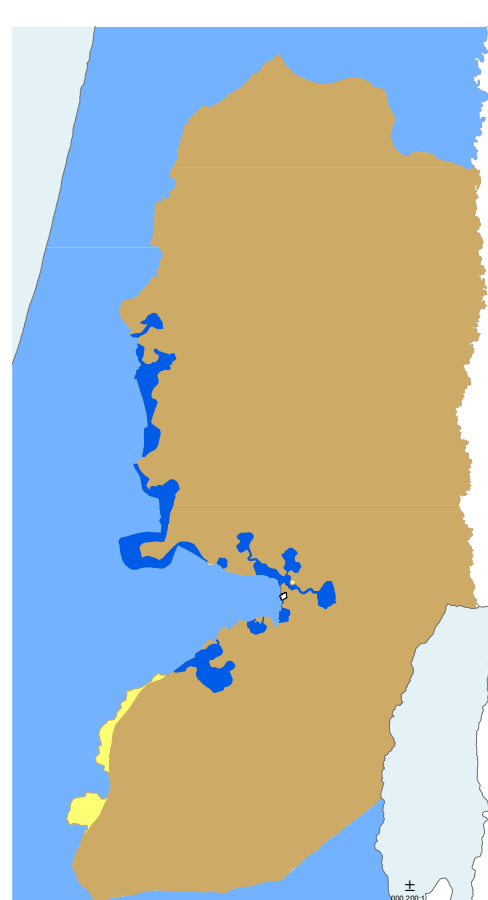
Percentage of settlers out of the total Israeli population

Source: Israeli CBS and Palestinian CBS, 2016



With the two state solution, 75% of the settlers will remain in their homes as part of land swaps

According to the Geneva Initiative model for an agreement



The potential border according to the Geneva Initiative

● Future Palestinian State
● Lands annexed to Israel
● Lands annexed to Palestine

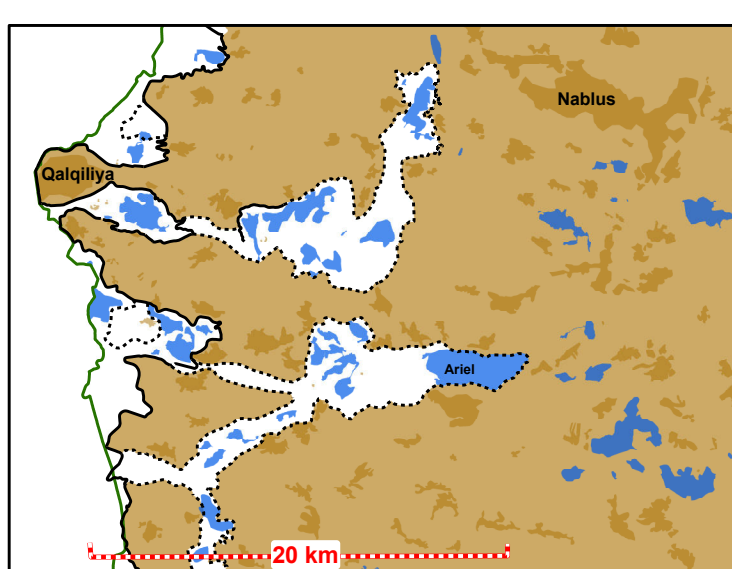


Map of an Israeli annexation of Area C

2.9 Million Palestinians would live in approx. 150 un-contiguous enclaves.

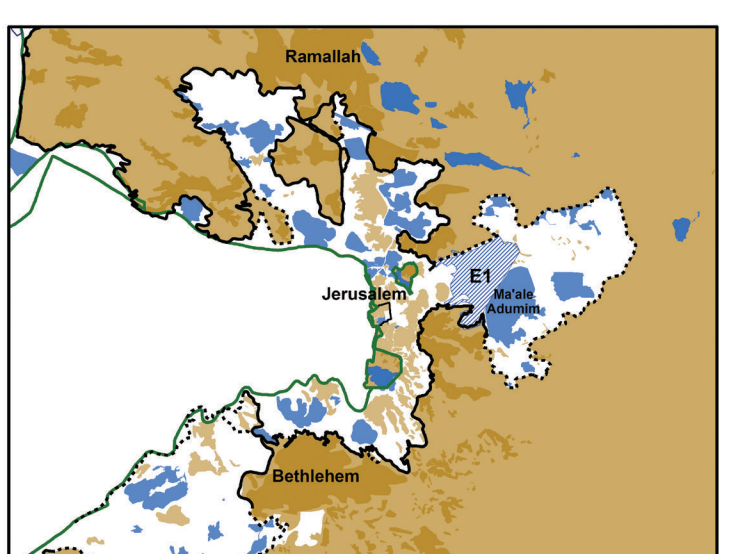
● Palestinians territories after annexation of area C to Israel
● Israeli territory after annexing Area C

How do settlements hinder peace?



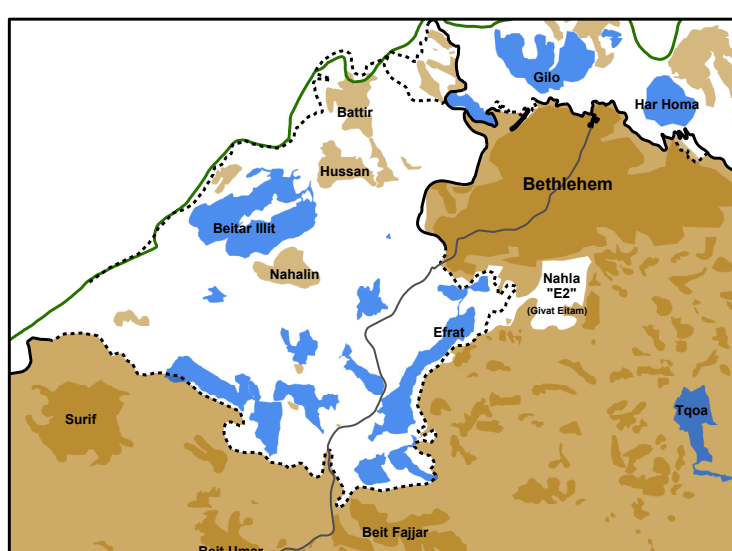
Ariel

Located 20 kilometers inside the West Bank, halfway between the Green Line and the Jordan River. Israeli annexation of Ariel would obstruct the establishment of a viable, contiguous Palestinian state.



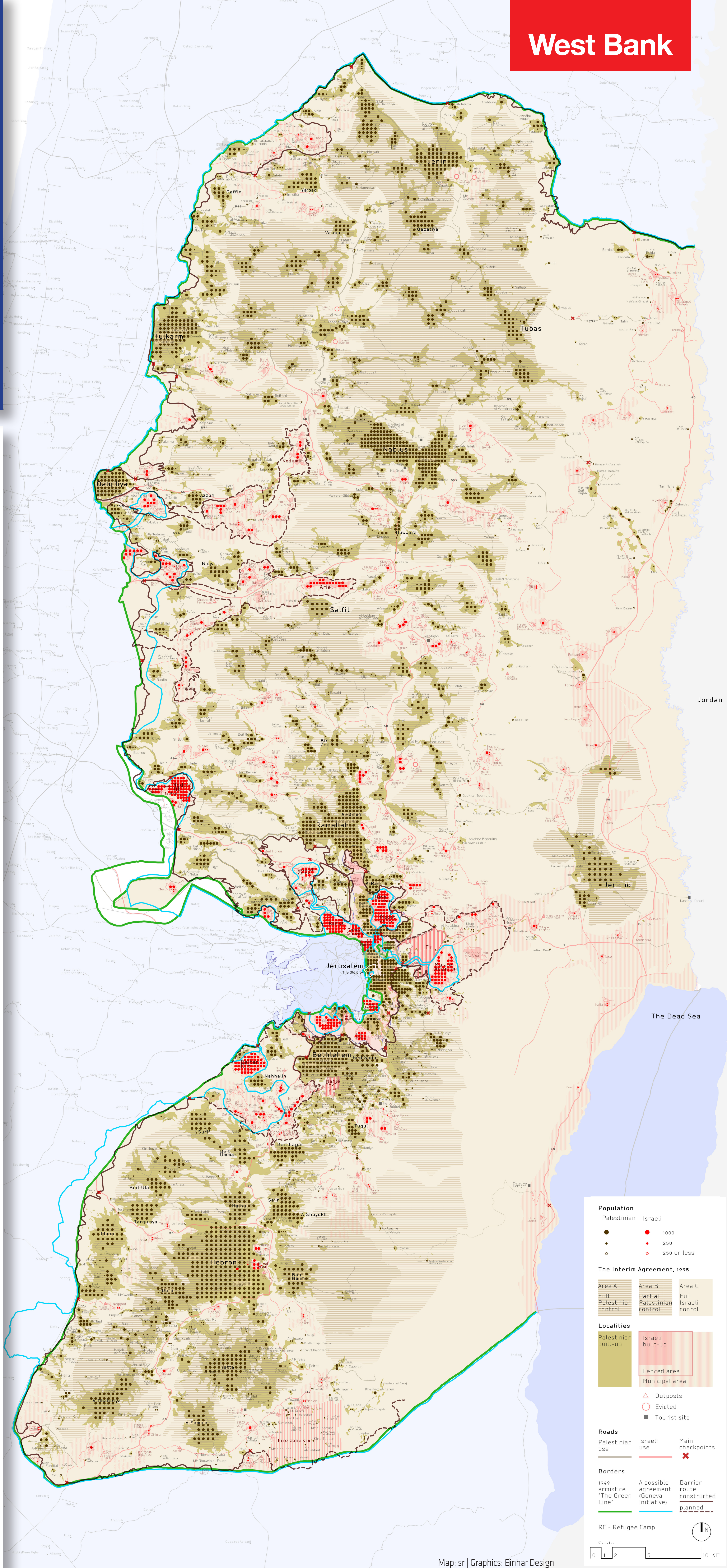
E1 plan

Planned for a site east of Jerusalem, adjacent to the settlement of Maale Adumim. If the proposed 3,682 housing units are built, they would effectively bisect the West Bank, preventing the establishment of a contiguous, viable Palestinian State. If built, E1 would isolate East Jerusalem from the West Bank preventing the development of a Palestinian political and economic capital in East Jerusalem.



Efrat and E2 plan

Efrat is located south of Bethlehem and east of the only major north-south highway in the southern West Bank (Rt.60). Both Efrat's location and the location of the separation barrier north and east of Bethlehem, prevent growth for the town of Bethlehem. Moreover, E2, a plan for 2,500 housing units to further expand the containment of Bethlehem is being promoted. In addition, annexation of Efrat will also include the annexation of the road that links the South of the West Bank with Bethlehem (Rt.60), thus further fragmenting the West Bank.



West Bank

Population
Palestinian Israeli
● 1000
● 250
● 250 or less

The Interim Agreement, 1995

Area A Full Palestinian control
Area B Partial Palestinian control
Area C Full Israeli control

Localities
Palestinian built-up
Israeli built-up
Fenced area
Municipal area

△ Outposts
○ Evicted
■ Tourist site

Roads
Palestinian use
Israeli use
Main checkpoints

Borders
1949 armistice "The Green Line"
A possible agreement (Geneva initiative)
Barrier route constructed
planned

RC - Refugee Camp
Scale
0 1 2 5 10 km