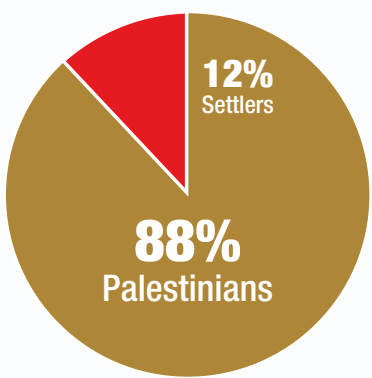


ISRAELI SETTLEMENTS 2017

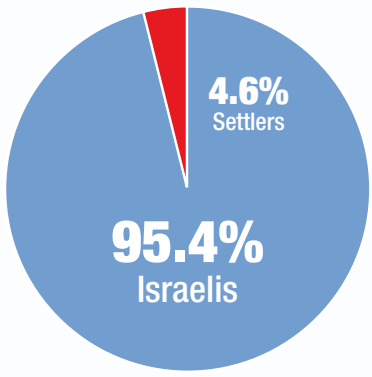
After 50 years of occupation, it is time for a two-state solution

PEACE NOW

To learn more about our work
Peace Now | www.peacenow.org.il

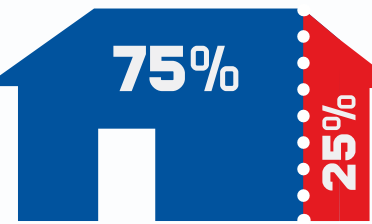


Percentage of settlers out of the total West Bank population



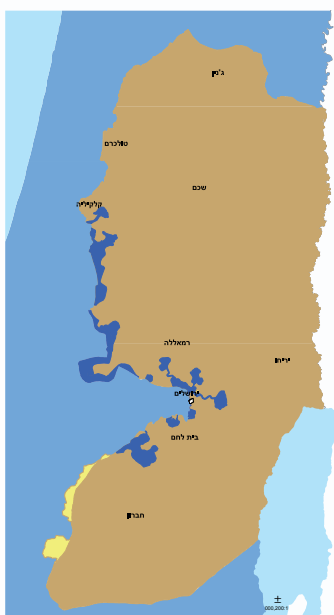
Percentage of settlers out of the total Israeli population

Source: Israeli CBS and Palestinian CBS, 2015



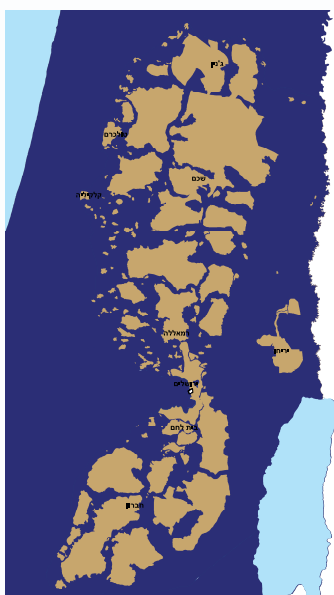
With the two state solution, 75% of the settlers will remain in their homes as part of land swaps

According to the Geneva Initiative model for an agreement



The potential border according to the Geneva Initiative

- Future Palestinian State
- Lands annexed to Israel
- Lands annexed to Palestine

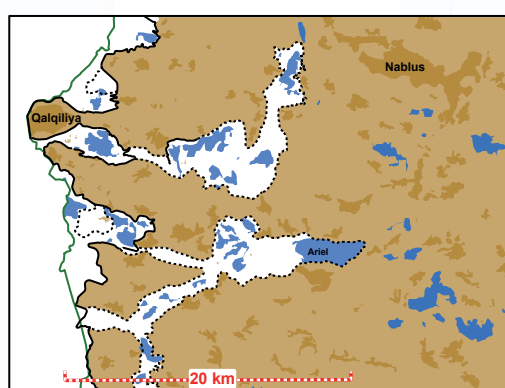


Map of an Israeli annexation of Area C

2.9 Million Palestinians would live in approx. 150 un-contiguous enclaves.

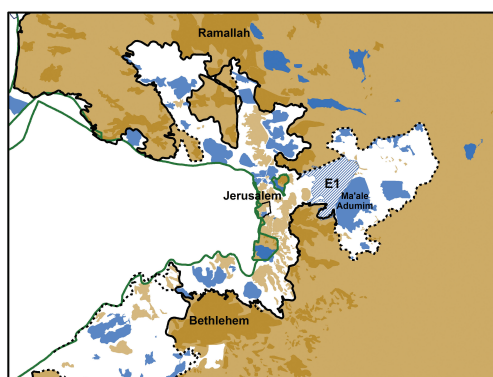
- Palestinians territories after annexation of area C to Israel
- Israeli territory after annexing Area C

How do settlements hinder peace?



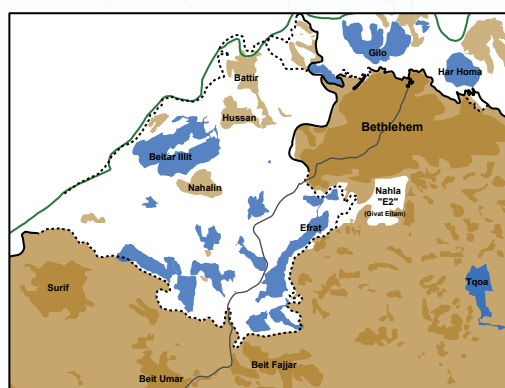
Ariel

Located 20 kilometers inside the West Bank, halfway between the Green Line and the Jordan River. Israeli annexation of Ariel would obstruct the establishment of a viable, contiguous Palestinian state.



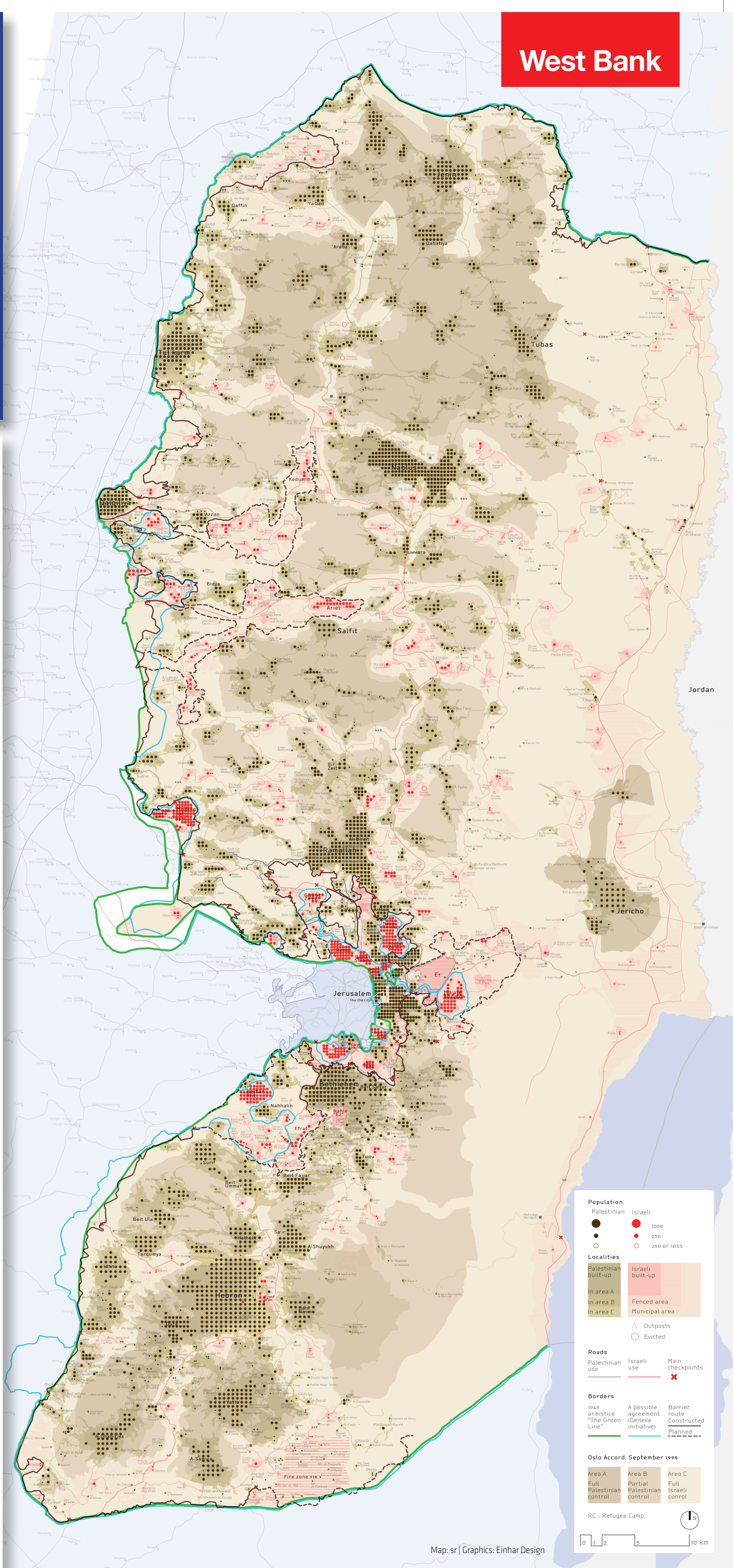
E1 plan

Planned for a site east of Jerusalem, adjacent to the settlement of Maale Adumim. If the proposed 3,682 housing units are built, they would effectively bisect the West Bank, preventing the establishment of a contiguous, viable Palestinian State. If built, E1 would isolate East Jerusalem from the West Bank preventing the development of a Palestinian political and economic capital in East Jerusalem.



Efrat and E2 plan

Efrat is located south of Bethlehem and east of the only major north-south highway in the southern West Bank (Rt.60). Both Efrat's location and the location of the separation barrier north and east of Bethlehem, prevent growth for the town of Bethlehem. Moreover, E2, a plan for 2,500 housing units to further expand the containment of Bethlehem is being promoted. In addition, annexation of Efrat will also include the annexation of the road that links the South of the West Bank with Bethlehem (Rt.60), thus further fragmenting the West Bank.



West Bank

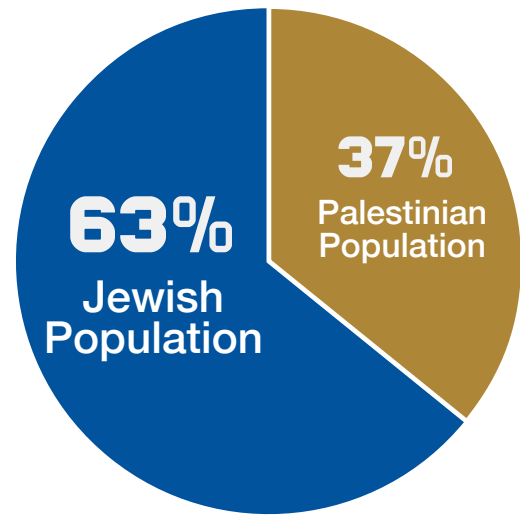
Population	
●	Israeli
●	Palestinian
●	1000
●	750
●	250 or less
Localities	
■	Palestinian built-up
■	Israeli built-up
■	In area A
■	In area B
■	In area C
■	Fenced area
■	Municipal area
△	Outposts
○	Evicted
Roads	
—	Palestinian use
—	Israeli use
—	Main checkpoints
×	
Borders	
—	1949 armistice "The Green Line"
—	A possible agreement (Geneva initiative)
—	Barrier route
—	Constructed
—	Planned
Oslo Accord, September 1995	
■	Area A
■	Area B
■	Area C
■	Full Palestinian control
■	Partial Palestinian control
■	Full Israeli control
■	RC - Refugee Camp

EAST JERUSALEM 2017

The two state solution is possible based on two capitals in Jerusalem: the Israeli neighborhoods being the Israeli capital, the Palestinian neighborhoods being the Palestinian capital, and a special arrangement for the Old City and the holy sites.

PEACE NOW

Jerusalem Population (West and East Jerusalem)

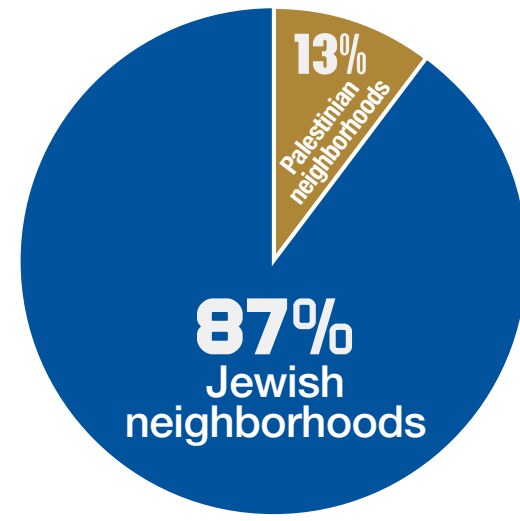


Jewish Population
534,000

Palestinian Population
316,000

Israeli CBS, 2014

Jerusalem Municipality Budget

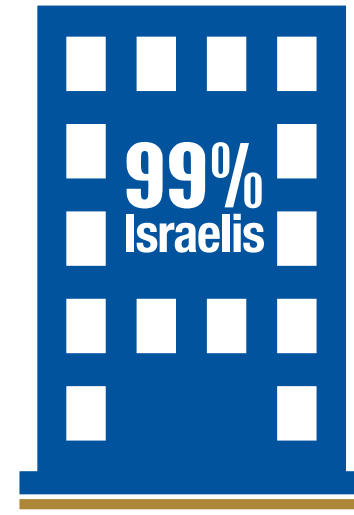


Investment in Jewish neighborhoods
3.9 Billion NIS

Investment in Palestinian neighborhoods
591 Million NIS

Ir Amim analysis for Jerusalem Municipality Budget, 2013

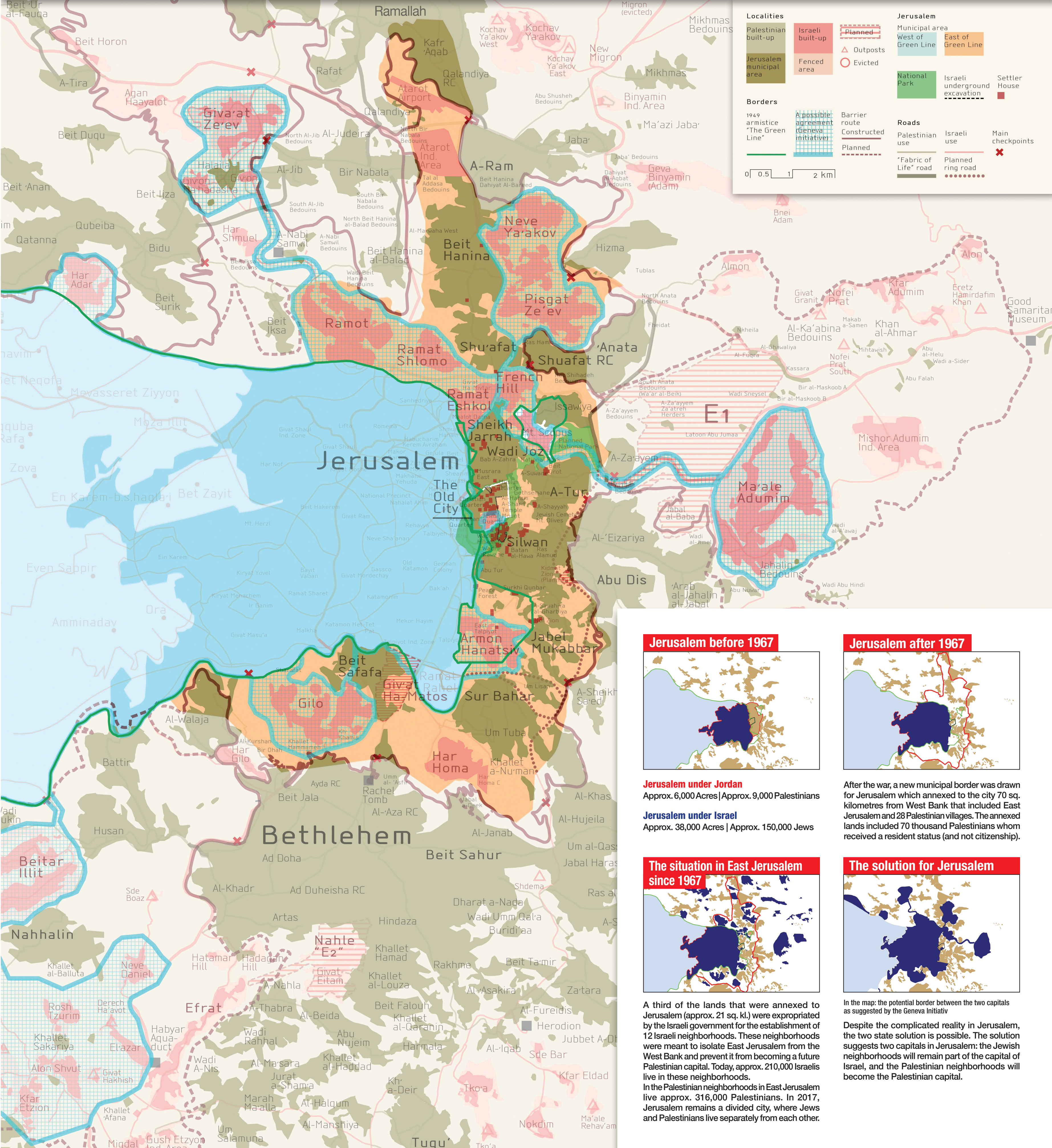
Government initiated construction in East Jerusalem since 1967



Jewish neighborhoods
55,335 Housing units

Palestinian neighborhoods
600 Housing units

Government construction (as apposed to Private construction), Peace Now estimate



Jerusalem before 1967



Jerusalem under Jordan
Approx. 6,000 Acres | Approx. 9,000 Palestinians

Jerusalem under Israel
Approx. 38,000 Acres | Approx. 150,000 Jews

Jerusalem after 1967



After the war, a new municipal border was drawn for Jerusalem which annexed to the city 70 sq. kilometres from West Bank that included East Jerusalem and 28 Palestinian villages. The annexed lands included 70 thousand Palestinians whom received a resident status (and not citizenship).

The situation in East Jerusalem since 1967



A third of the lands that were annexed to Jerusalem (approx. 21 sq. kl.) were expropriated by the Israeli government for the establishment of 12 Israeli neighborhoods. These neighborhoods were meant to isolate East Jerusalem from the West Bank and prevent it from becoming a future Palestinian capital. Today, approx. 210,000 Israelis live in these neighborhoods.

In the Palestinian neighborhoods in East Jerusalem live approx. 316,000 Palestinians. In 2017, Jerusalem remains a divided city, where Jews and Palestinians live separately from each other.

The solution for Jerusalem



In the map, the potential border between the two capitals as suggested by the Geneva Initiative

Despite the complicated reality in Jerusalem, the two state solution is possible. The solution suggests two capitals in Jerusalem: the Jewish neighborhoods will remain part of the capital of Israel, and the Palestinian neighborhoods will become the Palestinian capital.