

**Peace Now's Annual Settlement Construction Report 2016:**

**Stark increase in Settlement Construction**

Settlement Watch, Peace Now

Key findings:

Construction Starts

- 1,814 New housing units began construction, an increase of 34% to a parallel time period in the previous year (1,350 housing units)<sup>1</sup>.
- Nearly 70% (1,263 housing units) of the new construction was in settlements east of the proposed Geneva Initiative border, i.e. settlements that are likely to be evicted in a two states agreement.
- Over 26% (474 housing units) of the new construction was in areas that are east of the route of the separation barrier.
- 6% (114 housing units) of the construction was in illegal outposts.
- At least 10% (183 housing units) of the construction was illegal according to the Israeli laws applied in the occupied territories.
- The vast majority of the new construction, almost 94% (1,700 housing units), was for permanent structures, while that the remainder 6% (114 housing units) were new housing units in the shape of mobile homes both in outposts and in settlements.
- 42 new public buildings (such as schools, synagogues etc.) started to be built, alongside 23 structures for industry or agriculture.

Advancement of Plans (Jan-Dec 2016)

- 2,657 Housing units were advanced through promotions of plans for settlements.
- Almost 60% (1,540 housing units) of the units were east of the proposed Geneva Initiative border.
- Nearly 40% (1,026 housing units) of the units were east of the route of the separation barrier.
- 580 housing units were published for validation (final approval of a plan). Of those, nearly 75% (432 housing units) were east of the border proposed by the Geneva Initiative and over 50% (293 housing units) were east of the route of the separation barrier.
- Tenders were published for 365 housing units, of which 323 in East Jerusalem and 42 in West Bank settlements (in Kiryat Arba settlement).

Further Significant Settlement Developments in 2016:

- Two new outposts were established in the north part of the Jordan Valley.
- Construction of [a new road](#) to bypass the Palestinian village of a-Nabi Eliyas (near Qalqiliya) began on lands confiscated from Palestinians.
- [2,342 dunams were declared as "state lands"](#) south of Jericho.
- The Gush Etzion municipality's jurisdiction was extended in order to include a new settlement site, "[Beit Al-Baraka](#)", located apposite of Al-Aroub Refugee Camp.
- Advancement of a new settlement, [Shvut Rachel East](#), under the pretence of a neighbourhood, deep in the West Bank.
- A [new industrial area](#), west of Ramallah, and close to the Green Line, was approved.

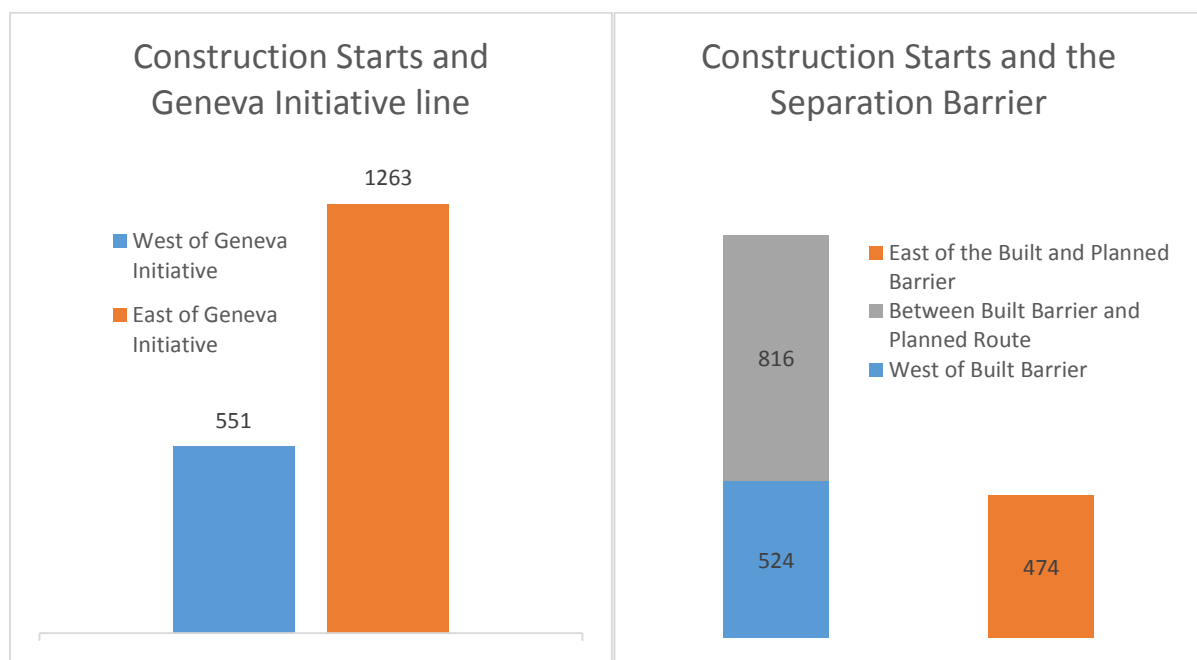
---

<sup>1</sup> The timeframe of the 2016 report refers to a 9 months period, between September 2015 and June 2016. In order to compare the construction starts to the 2015 report, which was for a 12 month period, we used ¾ of the total figure (1,800).

Peace Now's Settlement Watch annual construction report for 2016 reveals 1,814 new housing units in the settlements in a nine month period. These findings expose an increase of 34% to a nine month period from the 2015 Peace Now report.

Construction was largely focused in isolated settlements and in areas that are highly problematic in terms of a two-state solution. Nearly 70% (1,263 housing units) of the new housing starts were in areas that are east of the proposed Geneva Initiative border, and 71% were in areas that are east of the built separation barrier (26% were east of the planned route of the barrier, and 45% in areas where the barrier is planned but not built).

At least 10% (183 housing units) of the construction took place in sites considered illegal according to Israeli law (all construction in settlements is considered illegal according to international law). Of those 114 housing units (6% of all new housing units) were in illegal outposts and 69 housing units were within recognised settlements. Earlier this year Peace Now [published a report](#) that exposed the various mechanisms behind the illegal construction in the settlements and outposts.

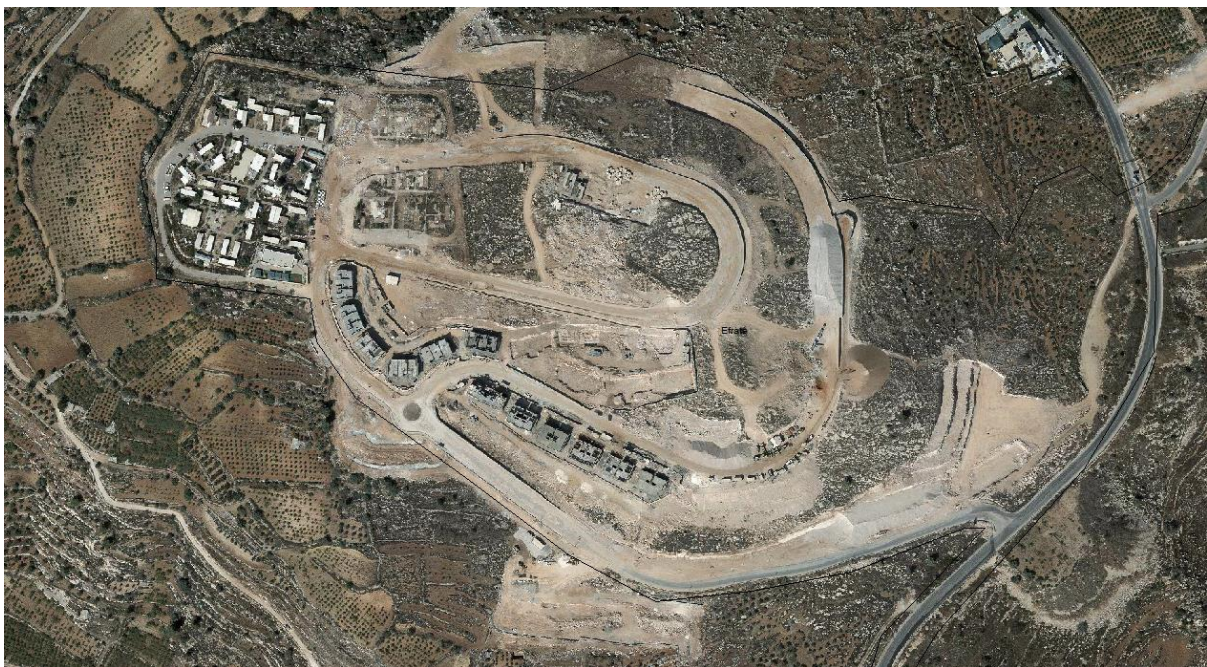




Efrat was the settlement with the greatest amount of construction starts in 2016, totalling 221 housing units. The new construction was in the north part of the settlement, in two neighbourhoods, Givat HaTamar (139 housing units) and Givat HaDagan (82 housing units). The settlement of Efrat is considered highly problematic in regards to a two state solution since it is adjacent to Bethlehem from the south, preventing the city from any future possibilities of development. Likewise, Efrat is located east of road 60, the only highway that connects the southern part of the West Bank with the north part of it. The annexation of Efrat to Israel would thus bloc this highway and will cut the southern parts of the West Bank from its northern parts.



*Givat HaTamar, Efrat settlement, 2016*



*Givat HaTamar, Efrat settlement, 2015*



After Efrat, the settlements that had the most construction starts were the two largest settlements in the West Bank, Modiin Illit (190 housing units) and Beitar Illit (140). Following them were the settlements Alei Zahav (126), Givat Ze'ev (114) and Ma'ale Adumim (97). The vast amount of construction at Alei Zahav is essentially due to construction at Leshem, a settlement established in 2011 under the façade of a neighbourhood of Alei Zahav. However despite the official pretence, Leshem has a separate entrance road its own community secretary, and appeals to a different social group than that of Alei Zahav.



*Leshem settlement, officially a neighbourhood of Alei Zahav, 2016*



*Leshem settlement, officially a neighbourhood of Alei Zahav, 2015*

Other settlements that had extensive amount of housing units include isolated settlements such as Kochav Yaakov (62, east of Ramallah), Bracha (54, adjacent to Nablus), Ariel (65) and Karnei Shomron (37).

Settlements with Most Construction Starts, 2016

	Settlement	Construction Starts	Geneva Initiative
1	Efrat	221	East
2	Modiin Illit	190	West
3	Beitar Illit	140	West
4	Alei Zahav (Leshem)	126	East
5	Givat Ze'ev (Agan HaAyaolot)	114	East
6	Ma'ale Adumim	97	West
7	Ariel	65	East
8	Alfei Menashe	64	West
9	Kochav Yaakov	62	East
10	Bracha	54	East

In outposts, 12 new construction starts began at the illegal outpost Karme Doron and 11 at Kerem Reim (also known as Nahalei Tal). Karme Doron is located close to Einav settlement, between the Palestinian cities of Tul Karem and Nablus. Kerem Reim is a new outpost west of Ramallah that was established in 2012. Recently, [Peace Now appealed](#) to the Supreme Court against its construction. In total, 114 construction starts began at outposts, of which 62 were for permanent structures and 52 were placements of mobile homes.

While in recent years, most of the construction in outposts was done by individuals who initiated the construction of their own houses, in 2016 we saw more organized construction projects in outposts, with massive infrastructure works which requires funding and investment. Such investment must require the active, or at least passive, involvement of the authorities, and the settlement municipal councils in particular. The mechanism of the governmental involvement in illegal construction in the West Bank was exposed by Peace Now in our latest report, which could be found here: <http://peacenow.org.il/en/unraveling-mechanism-behind-illegal-outposts>

Furthermore, subsequently to the period of this report (after September 2016) Peace Now recorded significant organized illegal construction in at least another 5 outposts and settlements (Harohel, Hayovel, Shvut Rachel, Kfar Eldad and Haresha). This phenomenon may imply a return to gross organized governmental illegal construction.

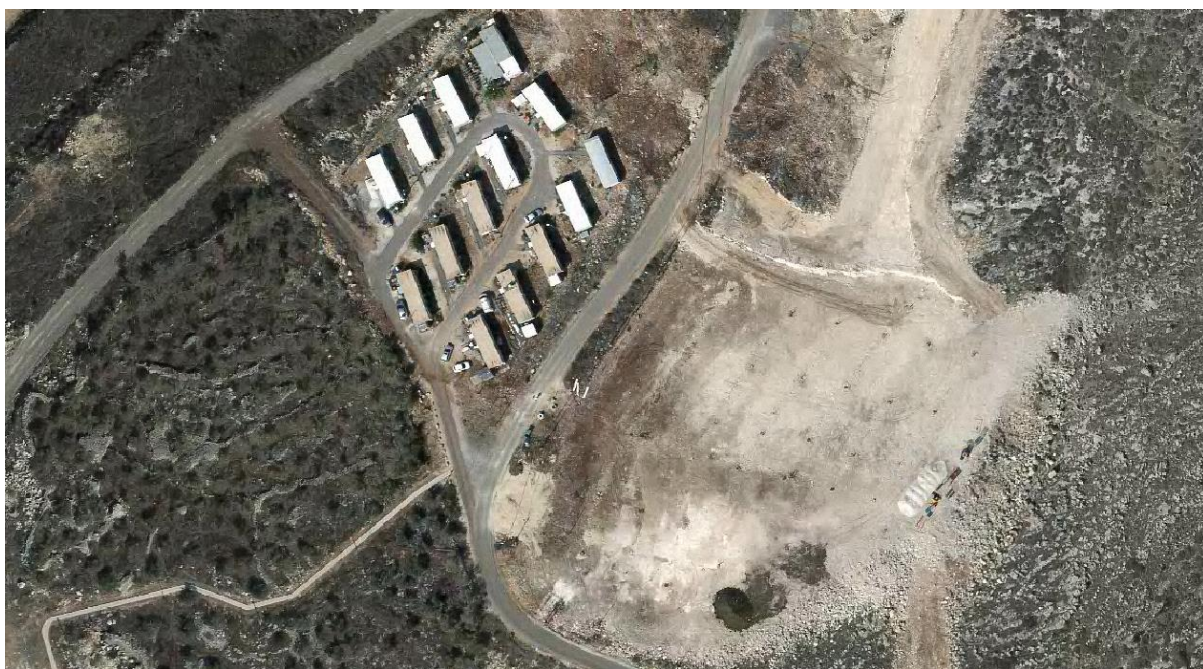
Outposts with most Construction Starts, 2016

	Outpost	Construction Starts	Permanent Structures	Mobile Homes	Geneva Initiative
1	Karme Doron	12	3	9	East
2	Kerem Reim	11	10	1	East
3	Ibei HaNahal	9	0	9	East
4	Achia	7	6	1	East



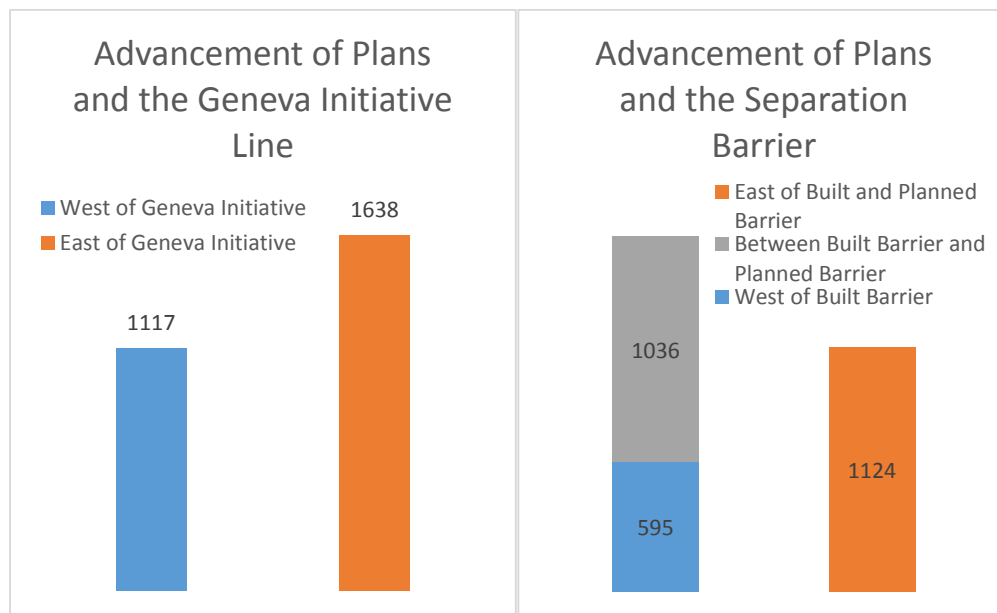


*Karmeï Doron Outpost, 2016*



*Karmeï Doron Outpost, 2015*

During 2016 (Jan-Dec) plans were advanced for 2,657 new housing units, an increase of 33% from 2015 (1,982 housing units). Nearly 60% of them (1,540 housing units) were east of the purposed Geneva Initiative border, and almost 40% (1,026 housing units) of the housing units were in settlements east of the route of the separation barrier. 580 Housing units that were advanced were published for validation (final approval), of which almost 75% (432 housing units) were east of the Geneva Initiative line and over 50% (293 housing units) were east of the separation barrier.



Planning Phase	Housing Units	No. of Plans	Geneva Initiative line				Separation Barrier					
			West	%	East	%	West	%	Planned	%	East	%
<b>Total New Housing Units</b>	<b>2657</b>	<b>39</b>	<b>1117</b>	<b>42%</b>	<b>1540</b>	<b>58%</b>	<b>595</b>	<b>22%</b>	<b>1036</b>	<b>39%</b>	<b>1026</b>	<b>39%</b>
Discussion for Deposit	1348	16	881	65%	467	35%	381	28%	550	41%	417	31%
Publication for Deposit	509	13	58	11%	451	89%	126	25%	79	16%	304	60%
Discussion for Validation	744	18	240	32%	504	68%	156	21%	345	46%	243	33%
Publication for Validation	580	9	148	26%	432	74%	42	7%	245	42%	293	50.5%

(1) The total amount of housing units does not accumulate to the sum of the amount of housing units in each planning phase. The reason is that some plans were advanced in more than one planning phase.

*(2) The data does not include plans that received an initial approval by the Minister of Defence, as this information is not publically available.*

In addition, 365 housing units were advanced in 2016 through publication of tenders. Of those, 323 housing units were in East Jerusalem while 42 were in West Bank settlements. Of the total 126 official settlements in the West Bank, as well as roughly 100 illegal outposts, only 13 settlements require publication of tenders before construction.

Finally, 2016 was stressed with further developments that made an impact on settlement expansion.

- 2 new outposts were established in the north of the Jordan valley around the months of October-November, 2016. The first is located near Givat Salit outpost and Mechola settlement, while the second, is adjacent to a military base, and close to Hemdat settlement. Both outposts had immediate effects on the Palestinian communities that reside nearby and herd their sheep in the area. As in most instances of outposts, despite receiving demolition orders from the military, the outposts continue to prosper.

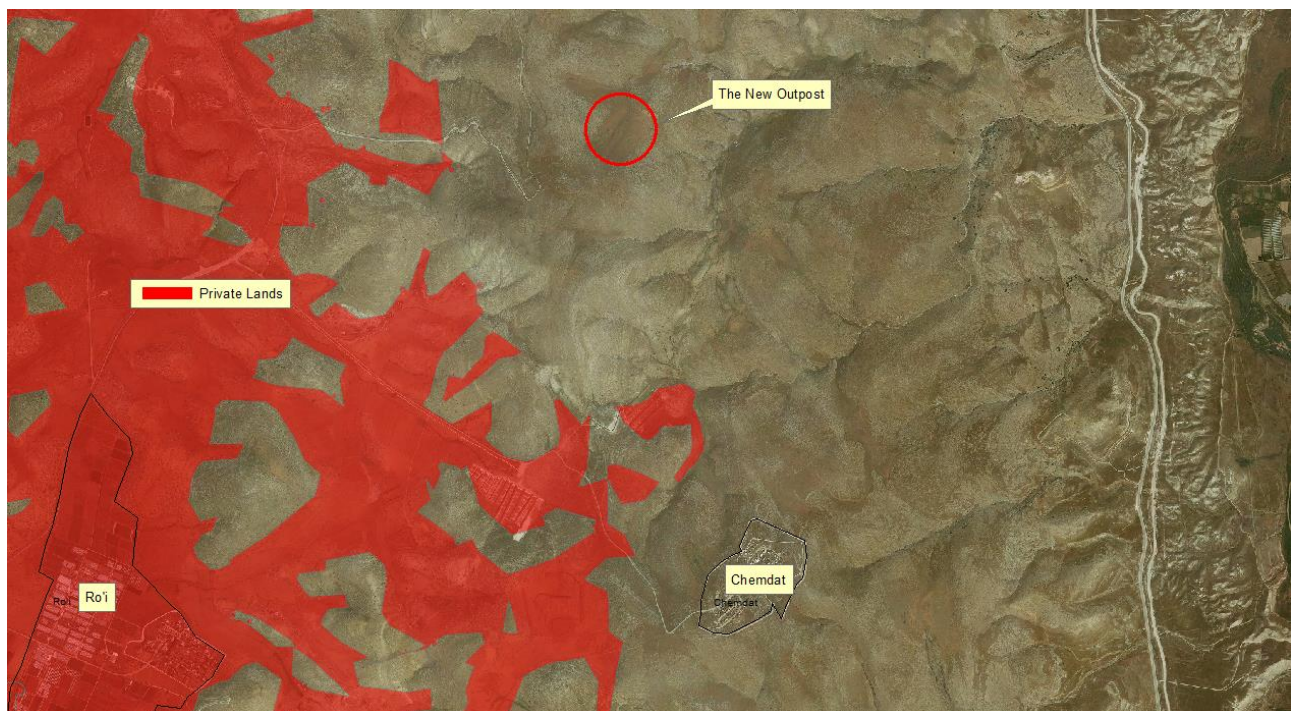
The establishment of the new outposts comes as a result of intensified Israeli policy to restrict Palestinian presence at the Jordan valley and at the same time to extend settler control over it. The Jordan valley, an area that comprises of 30% of the West Bank, and that is predominantly (87%) under full Israeli control (Area C), has suffered 40% of the demolitions by the Israeli authorities of Palestinian structures in Area C between 2009 and 2016, according to OCHA (a total of 2,077 structures). In 2016 alone 394 structures were demolished. For more information read our recent [fact sheet, created with other organisations](#).

Simultaneously, since 2011 the government has begun a process of retroactive legalisation of illegal outposts. This process has granted settlers a green light to establish new outposts knowingly that the government will grant support in cases of legal attempts to remove the outposts. Currently, 35 outposts are known to be in a process of retroactive legalisation. (for more information [read our report from 2015](#) and see also [here](#) ). Consequently, in addition to the 2 new outposts, 6 outposts have been established since 2011 (the outposts are: [Kerem Reim](#), [Tzofim Tzafon](#), Nahalt Yosef, Maale Amos East, Brosh, Nofei Prat South).

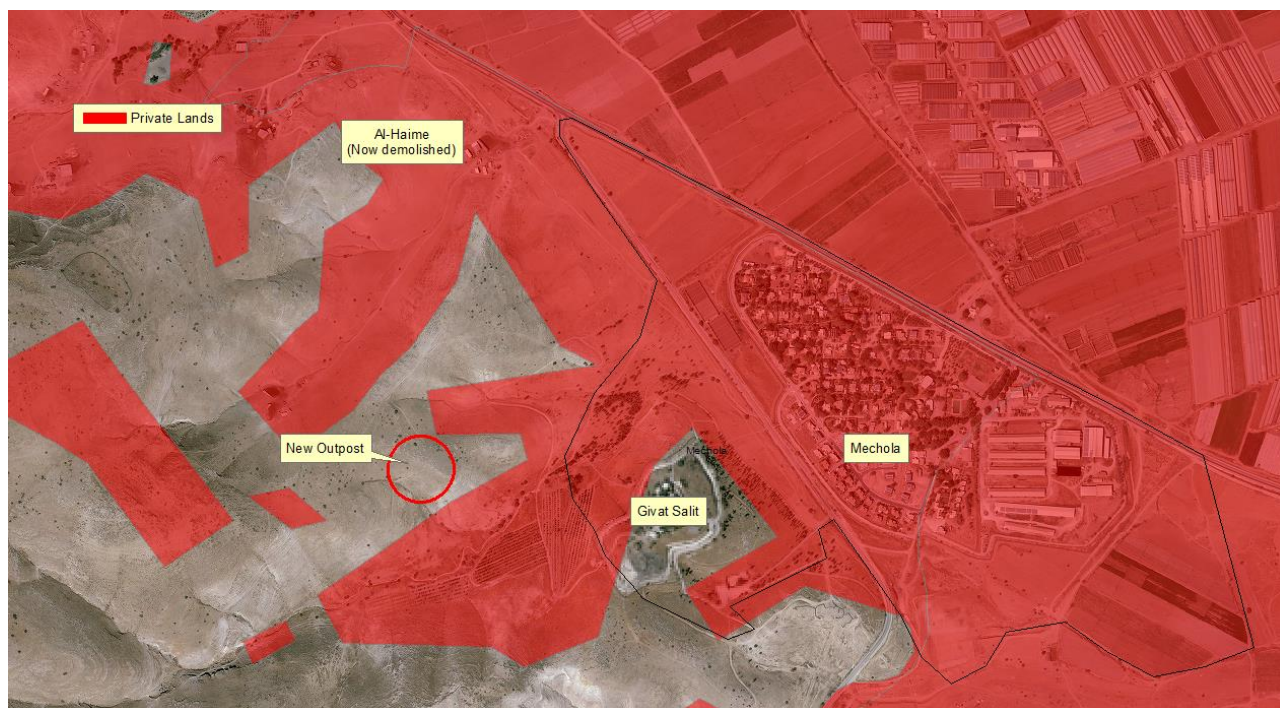




*A new outpost that serves as a cow farm near the settlement of Hemdat and adjacent to a military base.*



*The location of a new outpost near Hemdat and Ro'i settlements*



*The location of the other new outpost near Givat Salit (outpost) and Mechola settlement.*



- Last December the Supreme Court rejected a Palestinian petition to prevent the pavement of a new road that is to bypass the Palestinian town of a-Nabi Elias. Construction of the new road began several weeks later on private Palestinian lands that were confiscated for public use. While the road will seemingly serve both populations, Palestinians and settlers, it is built on private Palestinian lands, despite Palestinian objections, and with the sole purpose that settlers would not need to cross through the Palestinian town when heading to settlements that are further east.

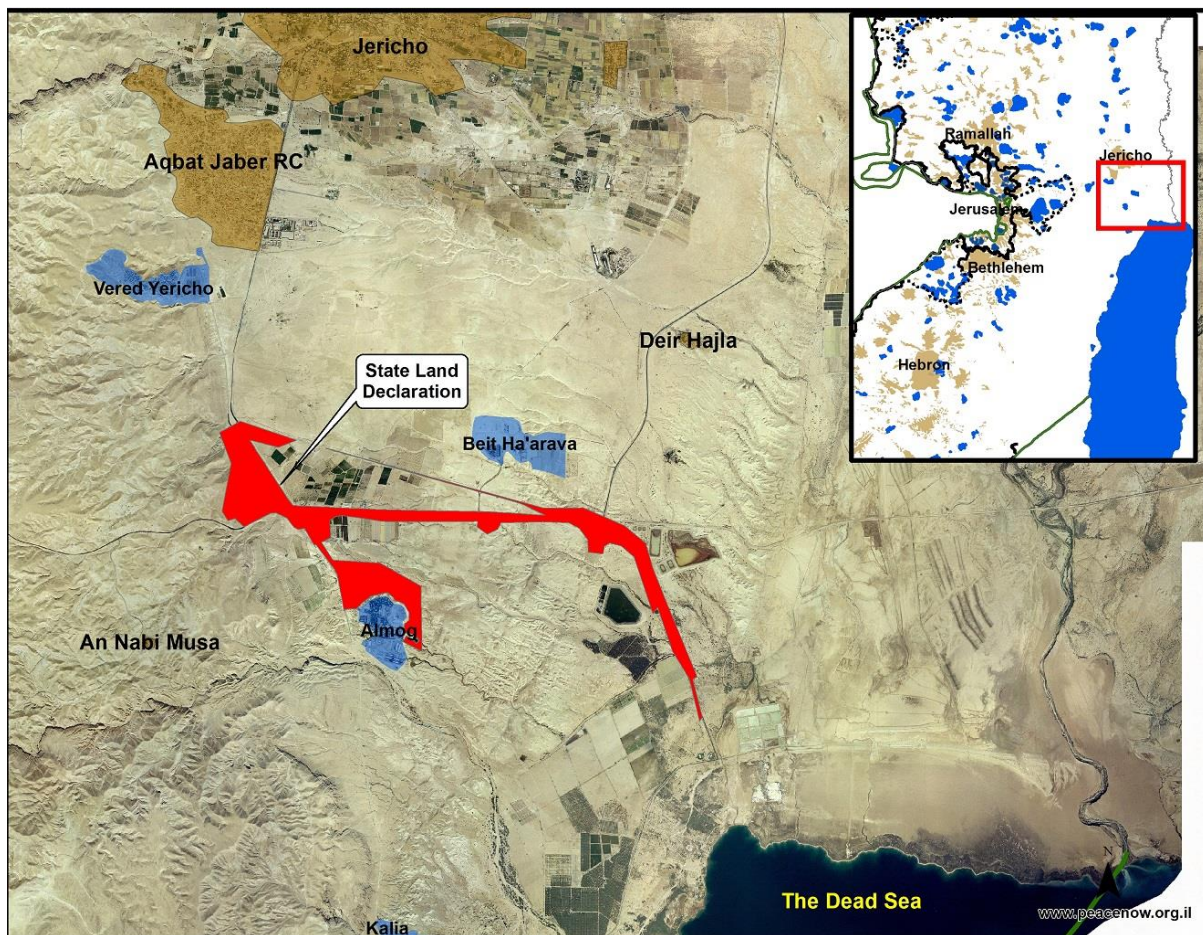
Bypass roads have had proven success in the past for the development and expansion of settlements as they enable settlers to reach their settlements on new paved highways that avoid Palestinian traffic and presence. Since the mid-90s, several bypass roads were established to bypass Palestinian cities such as Bethlehem, Ramallah, Hebron and Halhul. To read more, see our [case study on the Lieberman Road](#).



*Construction of the a-Nabi Elias bypass road*

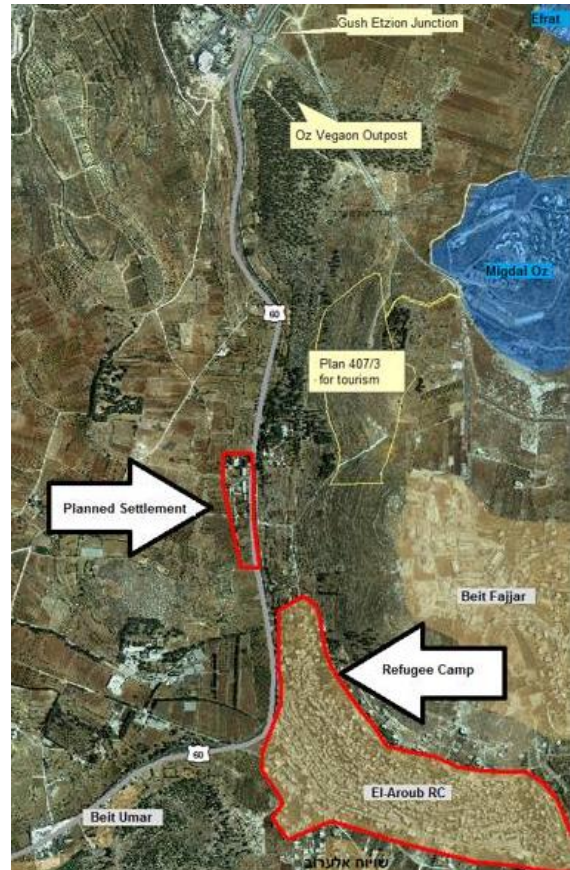
- On March 10, 2016, the government [declared 2,342 dunams](#) of lands as public lands ("state lands") south of Jericho. The declaration, which is in fact a confiscation, was meant for the expansion of nearby settlements as well as for trade and tourism projects operated by the settlers. This is one of the largest declarations in recent years.

The area south of Jericho is located deep in the West Bank and far beyond the green line and the separation barrier. In recent years the struggle over control over the corridor between Jerusalem and Jericho has highly intensified. The Israeli government increased demolitions of Bedouin structures along route 1 (between Jerusalem and Jericho) and at the same time it continues to promote plans for the expansion of settlements along the road, including in Ma'ale Adumim and in E-1. The declared area is at the eastern edge of this corridor, and control over this area is meant to split the West Bank in half and prevent the possibility to establish a viable and contiguous Palestinian State.





- The [jurisdiction of Gush Etzion's municipality was expanded](#) early in 2016 to include the Beit Al-Baraka compound, apposite of the Palestinian Al-Aroub Refugee Camp. The requisition of Beit Al-Baraka by settlers was approved by the Minister of Defence at their request. This is a dramatic and worrisome development and a blatant violation Israel's commitments starting from the Oslo Accords and the Road Map. It also contradicts the government's declared support of the two states solution. The new settlement, Beit Al-Baraka, is an enclave located in a Palestinian area intended to expand the Gush Etzion bloc further to the south, beyond the planned route of the Separation Barrier. The new settlement could also create a severe security risk by increasing the friction between settlers and Palestinians.





- A plan for a new settlement, Shvut Rachel East (aka Shvut Rachel B), was advanced for the first time in [2016](#). Shvut Rachel East is located deep in the West Bank, north east of Ramallah and north of Turmus Aya. The plan was originally suggested by the government of Israel as compensation to the 41 families from the illegal outpost of Amona, which was evacuated earlier this year (2017) due to a court order. The government went ahead and promoted the plan, which is for 98 housing units (with an intention to be 300 housing units in the future) despite of the fact that the settlers rejected the offer. Though technically the new site is referred to as a neighbourhood of Shilo, it is approximately 2 kilometres far from Shilo, and 1 kilometre away from [Shvut Rachel](#). The plan was published for validation on October 13<sup>th</sup>, 2016. Earlier this year (February, 2017), the plan was approved (published for validation). [On March 31](#) of this year, the government voted in favour of advancing an additional settlement for the settlers of Amona (a hilltop east of Shvut Rachel East).



- [Plan no. 230](#), for a new settlement industrial area, west of Ramallah, was published for validation on November 3<sup>rd</sup>. The designated plan is for over 310 dunams of land and was initiated by the Benjamin Regional Council. Industrial areas are another form of settlement and contribute to the enhancement of the settlement control in area C. Due to the relative proximity to the Green Line, the site is expected to bring many Israelis, whom are not settlers, to the area.





Data

## Construction Starts in Settlements

	Settlement / Outpost Name	Construction Starts	Permanent Structures	Mobile Homes	Settlement/ Outpost	Geneva Initiative	Barrier
	<b>TOTAL</b>	<b>1814</b>	<b>1700</b>	<b>114</b>			
1	Efrat	221	221	221	Settlement	East	Planned
2	Modiin Illit	190	190	0	Settlement	West	Built
3	Beitar Illit	140	139	1	Settlement	West	Planned
4	Alei Zahav (Leshem)	126	126	0	Settlement	East	Planned
5	Givat Ze'ev (Agan HaAyalot)	114	114	0	Settlement	East	Built
6	Maale Adumim	97	97	0	Settlement	West	Planned
7	Ariel	65	47	18	Settlement	East	Planned
8	Alfei Menashe	64	64	0	Settlement	West	Built
9	Kochav Yaakov	62	61	1	Settlement	East	East
10	Barcha	54	54	0	Settlement	East	East
11	Karnei Shomron	37	37	0	Settlement	East	Planned
12	Eshkolot	31	31	0	Settlement	East	Built
13	Nofei Prat	27	27	0	Settlement	East	Planned
14	Neria	26	24	2	Settlement	East	East
15	Oranit	25	25	0	Settlement	West	Built
16	Nili	24	24	0	Settlement	East	East
17	Almon	22	22	0	Settlement	East	Planned
18	Naala	21	21	0	Settlement	East	East
19	Tzofim	21	21	0	Settlement	East	Built
20	Beit Arie	18	18	0	Settlement	East	Planned
21	Eli	18	18	0	Settlement	East	East
22	Salit	16	16	0	Settlement	East	Built
23	Avnei Hefetz	15	15	0	Settlement	East	East
24	Reichan	15	15	0	Settlement	East	Built
25	Pnei Hever	15	7	8	Settlement	East	East
26	Dolev	14	14	0	Settlement	East	East
27	Migdalim	14	14	0	Settlement	East	East
28	Bruchin	13	1	12	Settlement	East	East
29	Karmeil Doron	12	3	9	Outpost	East	East
30	Maale Levona	12	12	0	Outpost	East	East
31	Kerem Reim	11	10	1	Outpost	East	East
32	Sdemot Mechola	11	11	0	Settlement	East	East
33	Maale Amos	10	10	0	Settlement	East	East
34	Etz Efraim	10	10	0	Settlement	West	Built
35	Shvut Rachel (Shilo)	10	10	0	Settlement	East	East
36	Ibei Hanahal	9	0	9	Outpost	East	East
37	Revava	9	9	0	Settlement	East	Planned
38	Vered Yericho	8	8	0	Settlement	East	East
39	Susya	8	8	0	Settlement	East	East

40	Metzadot Yehuda	8	0	8	Settlement	East	Built
41	Achia	7	6	1	Outpost	East	East
42	Geva Binyamin (Adam)	7	7	0	Settlement	East	East
43	Pduel	7	7	0	Settlement	East	Planned
44	Shama	7	0	7	Settlement	East	East
45	Esh Kodesh	6	6	0	Outpost	East	East
46	Nof Harim	6	6	0	Outpost	East	East
47	Haresha	6	0	6	Outpost	East	East
48	Gitit	6	6	0	Settlement	East	East
49	Shilo	6	6	0	Settlement	East	East
50	Adei Ad	5	1	4	Outpost	East	East
51	Har Adar	5	5	0	Settlement	West	Built
52	Har Shmuel (Givat Ze'ev)	5	5	0	Settlement	East	Built
53	Hinanit	5	5	0	Settlement	East	Built
54	Yakir	5	5	0	Settlement	East	Planned
55	Kdumim	5	5	0	Settlement	East	Planned
56	Alonei Shilo	4	4	0	Outpost	East	Planned
57	Bat Ain West	4	0	4	Outpost	West	Planned
58	Kochav HaShahar	4	4	0	Settlement	East	East
59	Mevo Horon	4	4	0	Settlement	East	Built
60	Hill 777	3	3	0	Outpost	East	East
61	Yair Farm	3	3	0	Outpost	East	Planned
62	Nofei Nehemya	3	3	0	Outpost	East	East
63	Haroe	3	0	3	Outpost	East	East
64	Zait Raanan	3	0	3	Outpost	East	East
65	Tkoa D	3	0	3	Outpost	East	East
66	Barkan	3	3	0	Settlement	East	Planned
67	Hashmonaim	3	3	0	Settlement	West	Built
68	Mehola	3	3	0	Settlement	East	East
69	Sansana	3	3	0	Settlement	East	Built
70	Otniel	3	3	0	Settlement	East	East
71	Shaarei Tikva	3	3	0	Settlement	West	Built
72	Shaked	3	3	0	Settlement	East	Built
73	Telem	3	3	0	Settlement	East	East
74	Ma'ale Efraim	3	0	3	Settlement	East	East
75	Hill 851	2	2	0	Outpost	East	East
76	Gvaot Olam	2	2	0	Outpost	East	East
77	Givat Harel	2	2	0	Outpost	East	East
78	Pnei Kedem	2	2	0	Outpost	East	East
79	Ramat Gilad	2	2	0	Outpost	East	East
80	Bnei Adam	2	1	1	Outpost	East	East
81	Neve Daniel North	2	1	1	Outpost	East	Planned
82	Kfar Tapuah West	2	0	2	Outpost	East	East



83	Negohot	2	2	0	Settlement	East	East
84	Naama	2	2	0	Settlement	East	East
85	Shavei Shomron	2	2	0	Settlement	East	East
86	Tomer	2	2	0	Settlement	East	East
87	Bat Ain	2	0	2	Settlement	West	Planned
88	Gilad Farm	1	1	0	Outpost	East	East
89	Lehavat Yitzhar	1	1	0	Outpost	East	East
90	Neve Erez	1	1	0	Outpost	East	East
91	Tzur Shalem	1	1	0	Outpost	East	East
92	Kida	1	1	0	Outpost	East	East
93	Hill 573	1	0	1	Outpost	East	East
94	Granit Hill 468	1	0	1	Outpost	East	Planned
95	Givat Hahish	1	0	1	Outpost	West	Planned
96	Maale Israel	1	0	1	Outpost	West	East
97	Maale Shlomo	1	0	1	Outpost	East	East
98	Har Gilo	1	1	0	Settlement	East	Built
99	Hemdat	1	1	0	Settlement	East	East
100	Tene	1	1	0	Settlement	East	East
101	Ptzael	1	1	0	Settlement	East	East
102	Kalia	1	1	0	Settlement	East	East
103	Kiryat Netafim	1	1	0	Settlement	East	Planned

## Advancement of Plans in Settlements

	Plan No.	Settlement Name	Publication Date	Planning Phase	New Units	Geneva	Barrier
1	114/2/2	Bracha	13/04/2016	Discussion for Deposit	54	East	East
2	115/14	Alfei Menashe	27/07/2016	Publication for Deposit	24	West	Built
	115/14	Alfei Menashe	16/03/2016	Discussion for Deposit	24	West	Built
3	121/16	Oranit	01/04/2016	Publication of Validation	20	West	Built
	121/16	Oranit	24/02/2016	Discussion of Validation	20	West	Built
4	121/20	Oranit	26/10/2016	Discussion of Validation	4	West	Built
	121/20	Oranit	16/03/2016	Discussion for Deposit	4	West	Built
5	121/6	Oranit	24/02/2016	Discussion of Validation	10	West	Built
6	122/1/3	Sha'arei Tikva	22/06/2016	Discussion for Deposit	6	West	Built
7	125/14/1	Elkana	31/08/2016	Discussion for Deposit	234	West	Built
8	126/7	Etz Efraim	18/07/2016	Discussion of Objections	34	West	Built
	126/7	Etz Efraim	20/01/2016	Discussion for Deposit	34	West	Built
	126/7	Etz Efraim	22/04/2016	Publication for Deposit	34	West	Built
9	132/4/8	Alei Zahav	21/02/2016	Publication of Validation (Online)	139	East	Planned
10	149/10	Tzofim	27/07/2016	Discussion of Validation	32	East	Built
11	170/4/5	Revava	02/12/2016	Publication for Deposit	17	East	Planned
	170/4/5	Revava	13/04/2016	Discussion for Deposit	17	East	Planned
12	171	Rechelim	02/08/2016	Publication for Deposit	97	East	East
	171	Rechelim	20/01/2016	Discussion for Deposit	97	East	East
13	201/3/12	Beit Arye	31/08/2016	Discussion of Validation	30	East	Planned
	201/3/12	Beit Arye	24/02/2016	Discussion for Deposit	30	East	Planned
	201/3/12	Beit Arye	27/05/2016	Publication for Deposit	30	East	Planned
14	202/1/1	Ofarim	31/08/2016	Discussion of Validation	179	East	Planned



15	205/3/1	Shvut Rachel B	28/09/2016	Discussion for Deposit	98	East	East
	205/3/1	Shvut Rachel B	13/10/2016	Publication for Deposit	98	East	East
16	208/1/23	Modi'in Ilit	13/04/2016	Discussion of Validation	48	West	Built
17	216/7	Giv'on Ha'hadasha	09/05/2016	Publication of Validation	22	West	Built
	216/7	Giv'on Ha'hadasha	24/02/2016	Discussion of Validation	22	West	Built
18	220/10/11	Giv'at Ze'ev Agan HaAyalot	31/08/2016	Discussion of Validation	20	East	Built
	220/10/11	Giv'at Se'ev Agan HaAyalot	26/01/2016	Publication for Deposit	20	East	Built
	220/10/11	Giv'at Se'ev Agan HaAyalot	20/06/2016	Discussion of Objections	20	East	Built
19	220/10/12	Giv'at Se'ev Agan HaAyalot	06/04/2016	Publication for Deposit	20	East	Built
20	220/10/5	Giv'at Se'ev Agan HaAyalot	20/06/2016	Discussion of Objections	14	East	Built
21	220/10/7	Giv'at Se'ev Agan HaAyalot	20/06/2016	Discussion of Objections	28	East	Built
	220/10/7	Giv'at Se'ev Agan HaAyalot	26/01/2016	Publication for Deposit	28	East	Built
22	220/24	Givat Ze'ev	13/04/2016	Discussion for Deposit	76	West	Built
23	223/5	Kochav Ha'shachar	29/05/2016	Discussion of Objections	288	East	East
24	235/2/4/1	Nerya	20/05/2016	Publication for Deposit	98	East	East
	235/2/4/1	Nerya	16/03/2016	Discussion for Deposit	98	East	East
25	304/ס	Chemdat	31/01/2016	Publication of Validation	78	East	East
26	322/ס	Rotem	23/03/2016	Publication of Validation	181	East	East
	322/ס	Rotem	24/02/2016	Discussion of Validation	181	East	East
27	401/2/1/4	Har Gilo	26/10/2016	Discussion for Deposit	3	East	Built
28	405/6/6/1	Alon Shvut	31/03/2016	Publication of Validation	60	West	Planned

	405/6/6/1	Alon Shvut	20/01/2016	Discussion of Validation	60	West	Planned
29	410/3/19	Efrat	08/04/2016	Publication for Deposit	32	East	Planned
30	411/6/1/2	Kfar Eldad	22/06/2016	Discussion of Validation	4	East	East
	411/6/1/2	Kfar Eldad	11/03/2016	Publication for Deposit	4	East	East
31	411/6/4/2	Nokdim	13/04/2016	Discussion for Deposit	70	East	East
32	420/1/24	Ma'ale Adumim	06/07/2016	Discussion for Deposit	459	West	Planned
33	420/1/4/37	Ma'ale Adumim	06/07/2016	Discussion of Validation	28	West	Planned
34	420/1/4/42	Ma'ale Adumim	06/07/2016	Discussion for Deposit	44	West	Planned
35	420/1/7/30	Ma'ale Adumim	26/05/2016	Publication of Validation	46	West	Planned
	420/1/7/30	Ma'ale Adumim	16/03/2016	Discussion of Validation	46	West	Planned
36	426/8/6	Beitar Illit	13/04/2016	Discussion of Validation	2	West	Planned
37	507/1/1	Carmel	06/04/2016	Publication of Validation	27	East	East
	507/1/1	Carmel	20/01/2016	Discussion of Validation	27	East	East
38	510/22/1	Kiryat Arba	16/03/2016	Discussion of Validation	24	East	East
39	515/1	Tene	21/04/2016	Publication of Validation	7	East	East
	515/1	Tene	06/01/2016	Publication for Deposit	7	East	East
	515/1	Tene	16/03/2016	Discussion of Validation	7	East	East